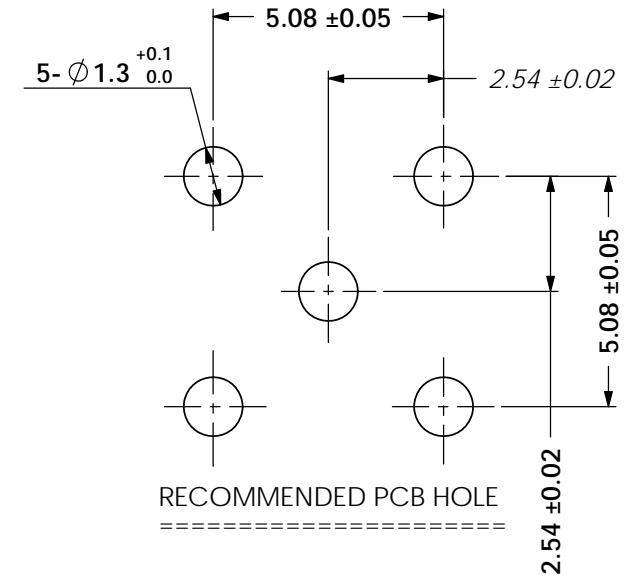
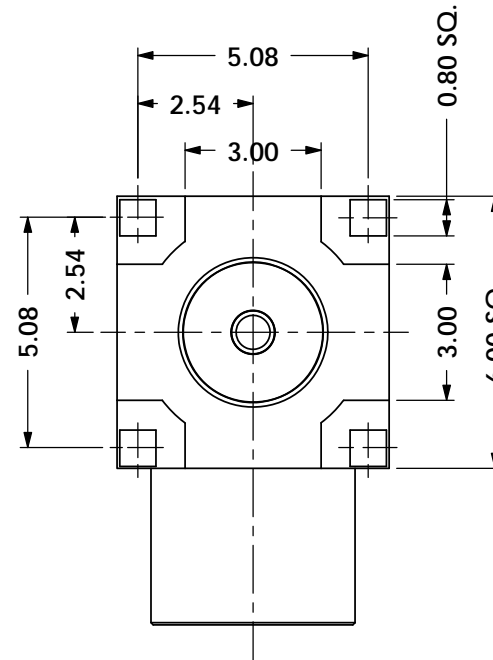
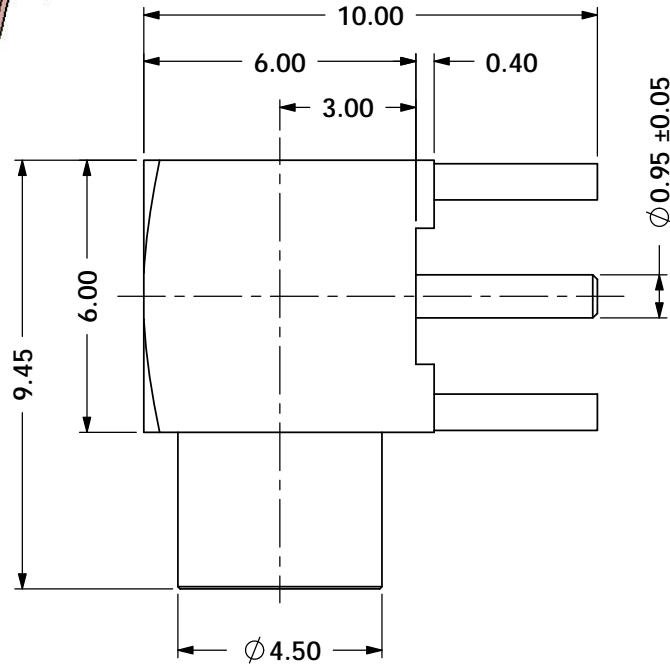


REV	DESCRIPTION	DRAWN	ECN	DATE
1	SAMPLE RELEASE (3002-7003)	Iris	S07-002	02-16'2007
2	SEE ECN (3007-7048)	Iris	S07-013	03-22'2007
3	SEE ECN (3007-7068)	IRIS	S07-019	04-16'2007
A	NEW RELEASE (3007-10515)	IRIS	10-405	12-08'2010



**ELECTRICAL PERFORMANCE :**

1. IMPEDANCE : 50 ohms
2. FREQUENCY RANGE : 0~ 6GHz
3. WORKING VOLTAGE : 335 Vrms MAX
4. DIALECTRIC WITHSTANDING VOLTAGE : 1000 Vrms MAX.

INSULATOR	TEFLON	NATURAL
INSULATOR	TEFLON	NATURAL
CONTACT	BERYLLIUM COPPER	GOLD 7u"
BODY	BRASS	GOLD FLASH
DESCRIPTION	MATERIAL	FINISHED

**RoHS**

COMPLIANT  
2002/95/EC

UNLESS OTHERWISE SPECIFIED ALL TOLERANCES ARE :

DIMENSION		ANGLE	
INTEGRAL DIMENSIONS	$\pm 1.0$	ANGULAR DIMENSIONS	$\pm 5.0^\circ$
1 PLACE DECIMAL	$\pm 0.5$	HOLES UNDER $\phi 0.5$	$\pm 0.1$
2 PLACE DECIMALS	$\pm 0.25$	ROUGHNESS	

	FINISH: SEE TABLE		MATERIAL: SEE TABLE
--	-------------------	--	---------------------

**nicon** Precise Corp.

DRAWN BY:	Iris Wang	DATE:	02-16'2007
ENGR BY:	Iris Wang	DATE:	02-16'2007
APVD BY:		DATE:	

TITLE: MCX R/A JACK PCB RECEPTACLE

Model NO: 28102

Drawing NO: 12-28102

UNIT:	MM	SIZE:	A4	REV:	A	CAD FILE: NEW DWG/28XXX /28102
SCALE:	6:1	SHEET:	1 OF 1			