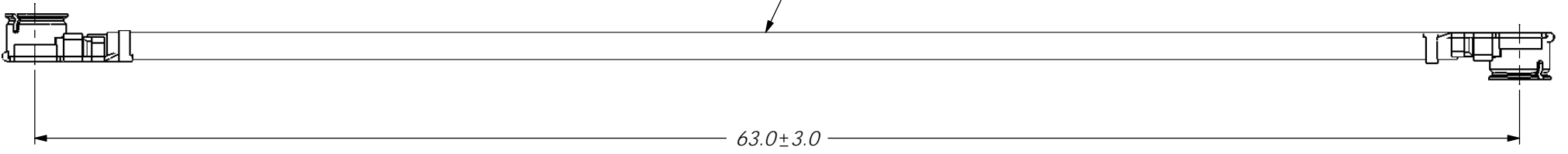
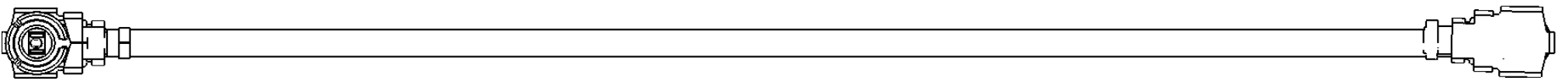
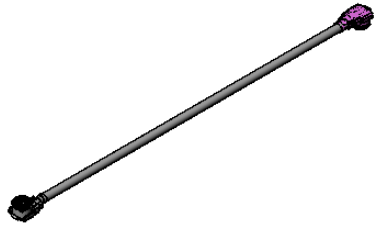


REV.	DESCRIPTION	DRAWN	ECN	DATE
A	NEW RELEASE (3005-8058)	TINA	08-341	12-24'2008



ELECTRICAL PERFORMANCE :

- 1.Impedance : 50 ohms
- 2.Frequency Range : DC~ 6GHz
- 3.WORKING VOLTAGE:AC60V MAX.
- 4.DIELECTRIC WITHSYANDING VOLTAGE: AC200V MAX.

Ø0.81 CABLE UL1745	GRAY	1
IPEX CONNECTOR	GOLD	2
DESCRIPTION	FINISHED	Q'TY

RoHS
COMPLIANT
2002/95/EC

UNLESS OTHERWISE SPECIFIED ALL TOLERANCES ARE :			
DIMENSION		ANGLE	
INTEGRAL DIMENSIONS	±1.0	ANGULAR DIMENSIONS	±5.0°
1 PLACE DECIMAL	±0.5	HOLES UNDER Ø0.5	±0.1
2 PLACE DECIMALS	±0.25	ROUGHNESS	
	FINISH: SEE TABLE	MATERIAL: SEE TABLE	



DRAWN BY:	TINA	DATE:	12-24'2008
ENGR BY:	TINA	DATE:	12-24'2008
APVD BY:		DATE:	

TITLE: IPEX TO IPEX FOR Ø0.81 CABLE 6.3CM			
Model NO: IPEXIPEX081A-0630M			
Drawing NO: 12-IPEXIPEX081A-0630M			
UNIT:	MM	SIZE: A4	REV. A
SCALE:	5:1	SHEET	1 OF 1
CAD FILE : NEW DWg\CABLE\IPEX			