

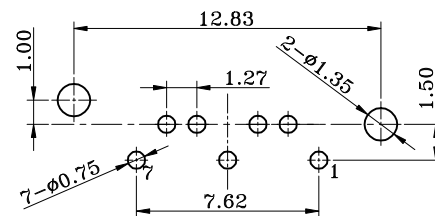
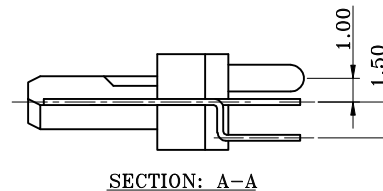
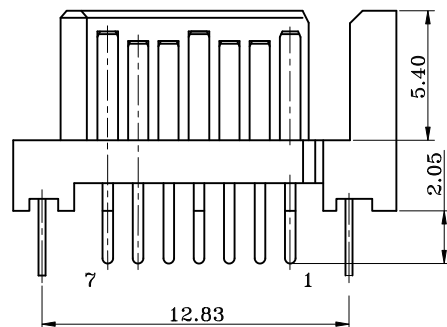
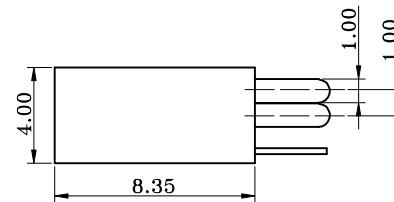
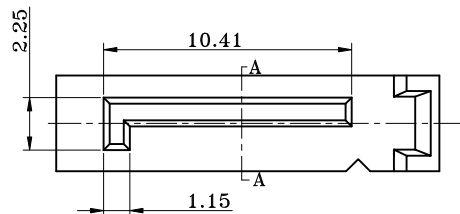
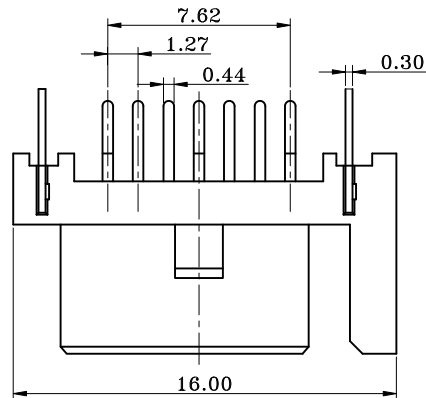
A

B

C

D

E



RECOMMENDED PCB LAYOUT(PCB THICKNESS: 1.6mm)
COMPONENT SIDE VIEW(TOLERANCE: ±0.05)

1. MATERIAL:

1.1 INSULATOR: LCP+30%G.F, UL94V-0;
INSULATOR COLOR: BLACK.

1.2 CONTACT: BRASS, SELECTIVE GOLD(SEE ORDER INFORMATION)PLATED
IN CONTACT AREA, 80u" MIN. TIN PLATED IN SOLDER
AREA, 30u" MIN. NICKEL UNDERPLATED OVERALL.

1.3 PEG: BRASS, 80u" MIN. TIN PLATED OVER
30u" MIN. NICKEL UNDERPLATED OVERALL

2. SPECIFICATIONS:

2.1 CURRENT RATING: 1.5 A.

2.2 CONTACT RESISTANCE: 30mΩ MAX.

2.3 INSULATION RESISTANCE: 1000MΩ MIN.

2.4 DIELECTRIC WITHSTANDING VOLTAGE: 500V AC PER MINUTE.

2.5 OPERATING TEMPERATURE: -40°C ~ +105°C.

3. NOTES:

3.1 THIS COMPONENT AND ITS HOMOGENEOUS
SUBCOMPONENTS ARE RoHS COMPLIANT.

3.2 RESISTANCE TO SOLDERING HEAT: 265°C FOR 5 SECONDS,
AND ONLY FOR WAVE SOLDERING PROCESS.

4. ORDER INFORMATION:

SE4211BB1 SX-07C

CONTACT PLATED:

S1: GOLD FLASH

S2: 3u" GOLD

S3: 5u" GOLD

S4: 10u" GOLD

S5: 15u" GOLD

S6: 30u" GOLD

1

2

3

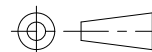
4

5

REV.	DESCRIPTION	ECN	DRAWN	DATE
A	NEW RELEASE		Darren	Jan.06.2010

REVISIONS

TOLERANCES:
DIM. XX ±0.3
X.XX ±0.25
UNIT: mm
GENERAL ANGLE:
±3°



TITLE:
SATA 7P MALE VERTICAL DIP TYPE

DRAWN: Darren DWG. NO.: SE4211BB1SX-07C

CHECKED: Brant PART NO.: SE4211BB1SX-07C

APPROVAL: Mark SCALE: none SHEET: 1 OF 1 LAYER: CN DWG. SIZE: A4 1/3 RFQ NO.: Q0912054

