

- MATERIAL:
  - INSULATOR: LCP, UL 94V-0.  
INSULATOR COLOR: SEE ORDER INFORMATION.
  - CONTACT: PHOSPHOR BRONZE, SELECTIVE GOLD (SEE ORDER INFORMATION) PLATED IN CONTACT AREA, 40u" MIN TIN PLATED IN SOLDER AREA, 30u" MIN. NICKEL UNDERPLATED OVERALL.
  - NAIL: COPPER ALLOY, 40u" MIN TIN PLATED ON SURFACE 30u" MIN. NICKEL UNDERPLATED OVERALL.
  - VACUUM COVER: STAINLESS STEEL.

- SPECIFICATIONS:
  - CURRENT RATING: 0.5A.
  - CONTACT RESISTANCE: 50mΩ MAX.
  - INSULATION RESISTANCE: 1000MΩ MIN.
  - DIELECTRIC WITHSTANDING VOLTAGE: AC 250V PER MINUTE.
  - OPERATING TEMPERATURE: -40°C~+105°C.

- NOTES:
  - THIS COMPONENT AND ITS HOMOGENEOUS SUBCOMPONENTS ARE RoHS COMPLIANT.
  - RESISTANCE TO SOLDERING HEAT: 265°C FOR 10 SECONDS.

4. SOLDER TAIL COPLANARITY 0.10mm Max.

5. ORDER INFORMATION

BB217DG X 2 SX-2 XX C

INSULATOR COLOR:  NO. OF CONTACTS:

A: NATURE 210: 2\*10 PINS=20 PINS

B: BLACK 215: 2\*15 PINS=30 PINS

J: BROWN ~ ~

CONTACT PLATED: 270: 2\*70 PINS=140 PINS

S1: GOLD FLASH 280: 2\*80 PINS=160 PINS

S2: 3u" GOLD

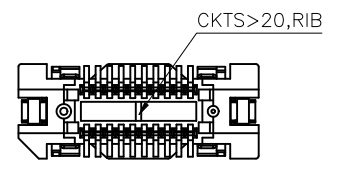
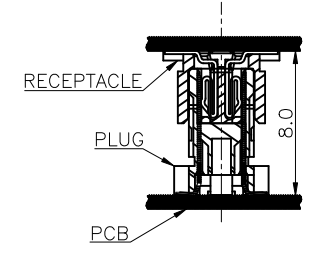
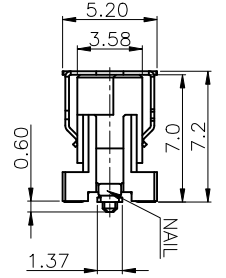
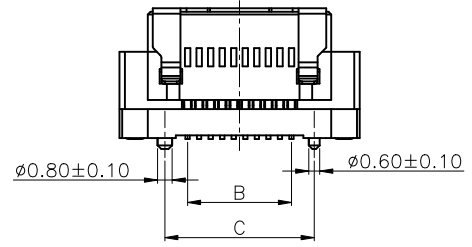
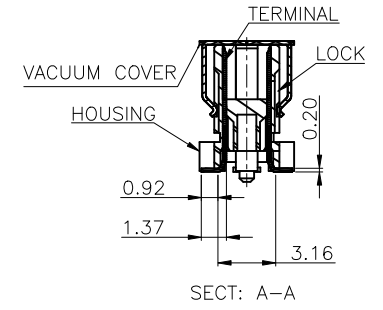
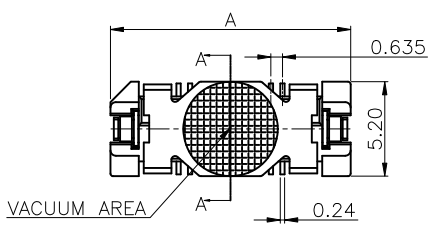
S3: 5u" GOLD

S4: 10u" GOLD

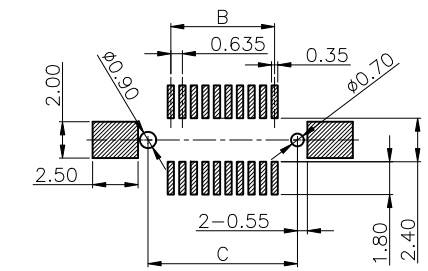
S5: 15u" GOLD

S6: 30u" GOLD

S7: 50u" GOLD



NO	DIM.				TOL.
	52.67	50.165	57.67	160	
	46.32	43.815	51.32	140	---
	39.97	37.465	44.97	120	---
	33.62	31.115	38.62	100	---
	30.45	27.94	35.45	90	---
	27.27	24.765	32.27	80	---
YES	24.1	21.59	29.1	70	---
	20.92	18.415	25.92	60	OK
	17.75	15.24	22.75	50	---
	14.57	12.065	19.57	40	---
	11.4	8.89	16.4	30	---
	8.22	5.715	13.22	20	OK
LOCK	C	B	A	CONTACTS AVAILABLE	



RECOMMENDED PCB LAYOUT(PCB THICKNESS: 1.6mm)  
COMPONENT SIDE VIEW(TOLERANCE: ±0.05)

REV.	DESCRIPTION	ECN NO.	NAME	DATE
A1	MODIFY SOLDER TAIL COPLANARITY DIGITAL	ECN1204006	Jim	Apr.19.2012
A0	NEW RELEASE		David	Aug.22.2012

DIM.	TOL.
X	
X.X	±0.30
X.XX	±0.25
X.XXX	±0.15
GENERAL ANGLE: ±3°	

TITLE:	
BOARD TO BOARD PITCH 0.635mm MALE SMT VERTICAL TYPE	
DWG. NO.:	C-BB217DGX2SX-2XXC
PART NO.:	BB217DGX2SX-2XXC
UNIT:	mm
SCALE:	none
SHEET:	1 OF 1
DWG. SIZE:	A4
LAYER:	CA059
APPROVED:	Frank

RFQ NO.: Q1108061/62

REVISIONS